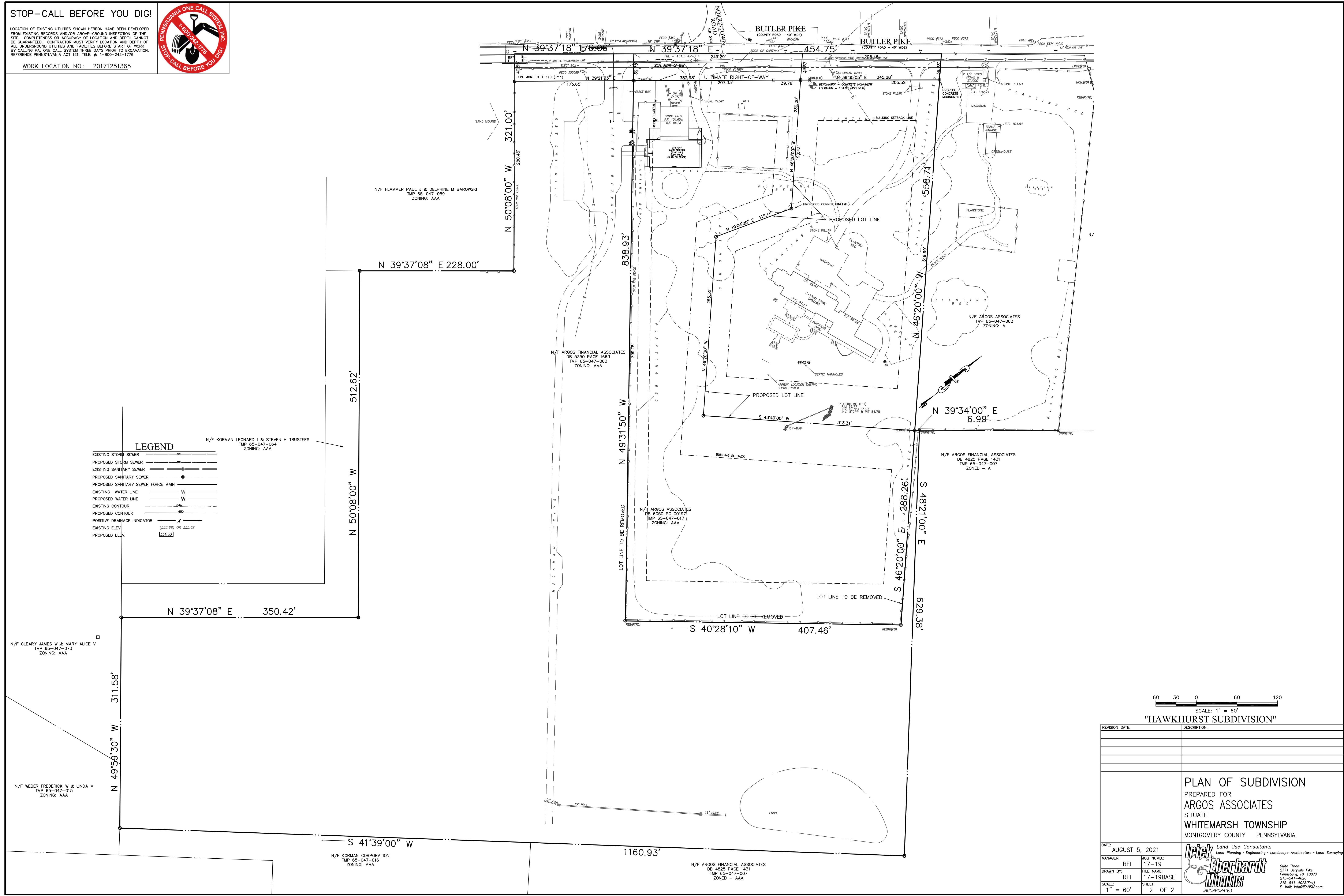


STOP-CALL BEFORE YOU DIG!

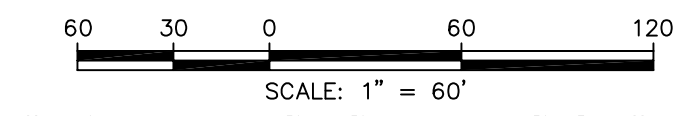
LOCATION OF EXISTING UTILITIES SHOWN HEREON HAVE BEEN DEVELOPED FROM EXISTING RECORDS AND/OR ABOVE-GROUND INSPECTION OF THE SITE. COMPLETENESS OR ACCURACY OF LOCATION AND DEPTH CANNOT BE GUARANTEED. CONTRACTOR MUST VERIFY LOCATION AND DEPTH OF ALL UNDERGROUND UTILITIES AND FACILITIES BEFORE START OF WORK. BY CALLING PA. ONE CALL SYSTEM THREE DAYS PRIOR TO EXCAVATION. REFERENCE PENNSYLVANIA ACT 121, TELE. # 1-800-242-1776.

WORK LOCATION NO.: 20171251365



LEGEND

EXISTING STORM SEWER	---
PROPOSED STORM SEWER	---
EXISTING SANITARY SEWER	---
PROPOSED SANITARY SEWER	---
PROPOSED SANITARY SEWER FORCE MAIN	---
EXISTING WATER LINE	---
PROPOSED WATER LINE	---
EXISTING CONTOUR	---
PROPOSED CONTOUR	---
POSITIVE DRAINAGE INDICATOR	---
EXISTING ELEV.	(333.68) OR 333.68
PROPOSED ELEV.	(334.50)



"HAWKHURST SUBDIVISION"

REVISION DATE:	DESCRIPTION:

<p>PLAN OF SUBDIVISION PREPARED FOR ARGOS ASSOCIATES SITUATE WHITEMARSH TOWNSHIP MONTGOMERY COUNTY PENNSYLVANIA</p>	
<p>DATE: AUGUST 5, 2021 MANAGER: RFI DRAWN BY: RFI SCALE: 1" = 60'</p>	<p>JOB NUMB.: 17-19 FILE NAME: 17-19BASE SHEET: 2 OF 2</p>

<p>Trick Eberhardt Mentis INCORPORATED</p>	<p>Land Use Consultants Land Planning • Engineering • Landscape Architecture • Land Surveying</p> <p>Suite Three 2771 Gayville Pike Pottsville, PA 18773 717-541-4626 215-541-4623(fax) E-Mail: info@EANDM.com</p>
--	--